

Driftline

Spülsaum

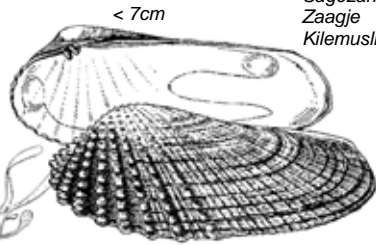
Vloedlijn

Opskyfslinie

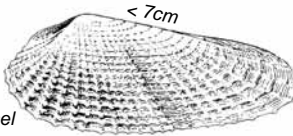


Knotted wrack
Knotentang
Knotswier
Buletang

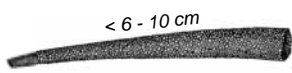
< 40-150 cm



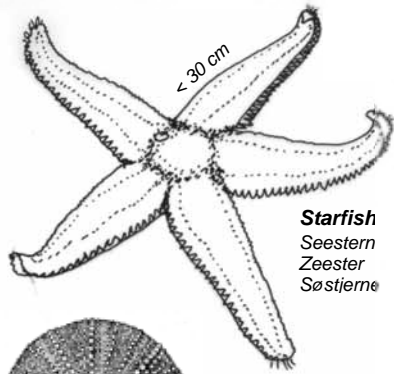
American piddock
Amerikaanse Bohrmuschel
Amerikaanse boormossel
Amerikaansk boremusling



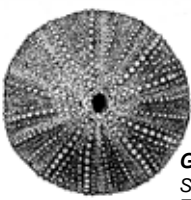
White piddock
Weiße Bohrmuschel
Witte boormossel
Almindelig boremusling



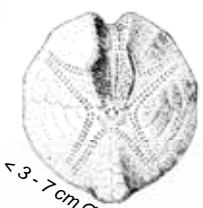
Trumpet worm
Köcherwurm
Goudkammetje
Isvaffelorm



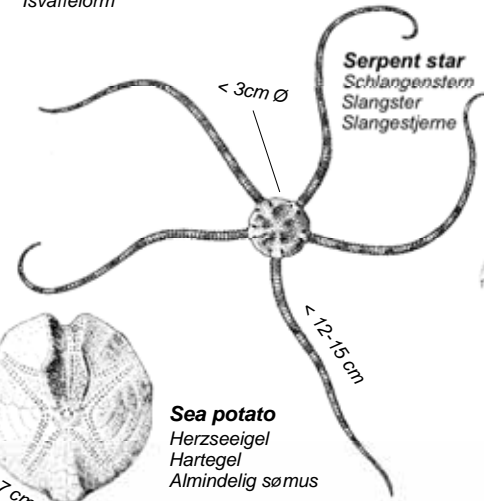
Starfish
Seestern
Zeester
Søstjerne



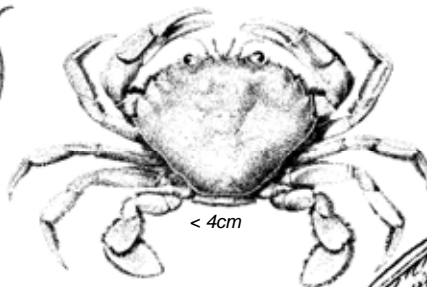
Green sea urchin
Strandseeigel
Zeeappel
Gewoon tangborre



Sea potato
Herzseeigel
Hartegel
Almindelig sømus



Serpent star
Schlangensterm
Slangster
Slangestjerne

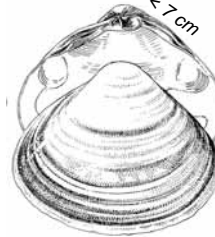


Swimming crab
Schwimmkrabbe
Zwemkrab
Swømmekrabbe

Banded wedge shell
Sägezähnhchen
Zaagje
Kilemusling

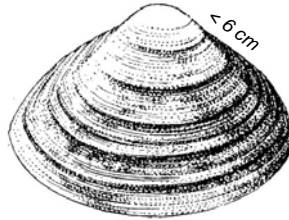


< 3 cm



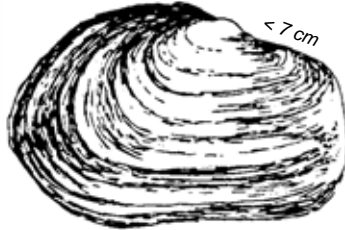
Oval trough shell
Ovale Trogmuschel
Ovale strandschelp
Elliptisk trugmusling

< 7 cm



Rayed trough shell
Strahlenkörbchen
Grote strandschelp
Almindelig trugmusling

< 6 cm



Blunt gaper
Gestützte Klaffmuschel
Afgeknotte gaper
Afstumpet sandmusling

< 7 cm



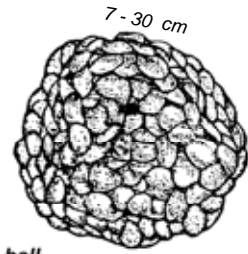
Netted dog-whelk
Netzreusenschnecke
Gevlochten fuikhoorn
Dværgkonk

< 3 cm



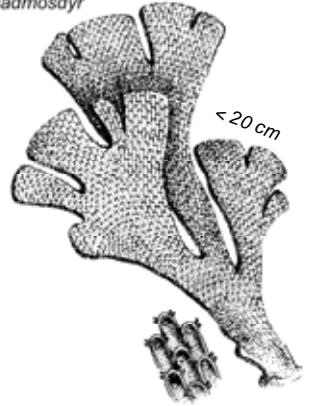
Common whelk
Wellhornschnecke
Wulk
Konk

< 12 cm



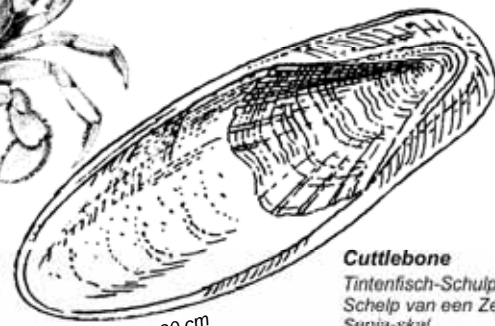
Sea wash ball
(egg masses of the common whelk)
Eikapseln der Wellhornschnecke
Eikapsels van de wulk
Æggene af konk

7-30 cm



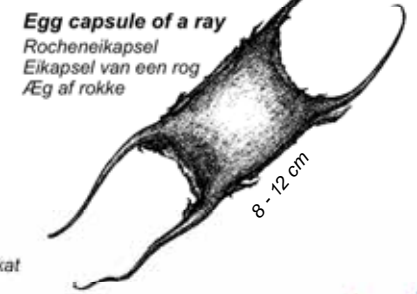
Hornwrack
Blättermoostierchen
Bladachtig hornwier
Bladmosdyr

< 20 cm



Cuttlebone
Tintenfisch-Schulp
Schelp van een Zeekat
Sepia-skal

7-30 cm



Egg capsule of a ray
Rocheneikapsel
Eikapsel van een rog
Æg af rokke

8-12 cm

Drawings: F. Knorr (from DeHaas/Knorr "Was lebt im Meer an Europas Küsten") & R. Borcharding

